

AGGREGATE PROJECT DATA TO UNCOVER SIGNIFICANT ORGANIZATIONAL VALUE

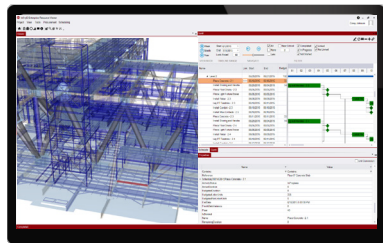
Today's capital projects are more complex than ever. Many stakeholders are often involved and each may use different software to manage designs, costs, schedules and assets. Lack of interoperability between these systems increases the risk of overruns, change orders, and miscommunication between key project stakeholders.

To solve this problem, InfinyD consolidates data from disparate sources to create a single platform that can be leveraged across the project lifecycle. InfinyD is not a design tool. It instead links business data into a project information model that merges details about every object that needs to be manufactured, installed or constructed. With InfinyD, project teams share a model that becomes enriched with relevant project

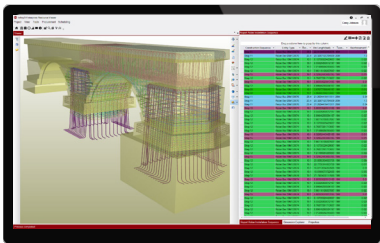
data, ensuring better communication, alignment and efficiency. By collecting relevant project data during project execution, the turnover process is streamlined, allowing owners to perform ongoing maintenance more efficiently.

Delivering Value from Your Project Data

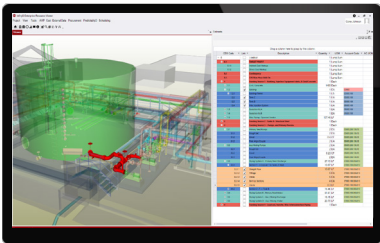
- Streamline stakeholder communications
- Gain real-time status across systems and disciplines
- Increase material management efficiency
- View and address schedule impacts earlier
- Avoid rework and project delays
- Compare plans to actuals in real time
- Enable full asset information management



Visual Scheduling



Visual Procurement



Visual Estimating

.....

ABOUT INEIGHT

With applications trusted for more than 25 years, InEight combines proven software technology with a unified vision to help companies visualize, estimate, manage, control and connect all aspects of capital and maintenance projects. InEight now has more than 20,000 users in more than 500 companies in 33 countries.

The InEight solution portfolio enables project-driven companies to get the visibility and control they need to avoid surprises, increase operational efficiency and improve profitability across the project lifecycle. Based in Scottsdale, Ariz., InEight is a subsidiary of Kiewit Corporation (Kiewit). Kiewit, through its subsidiaries, is one of North America's largest and most respected construction and engineering organizations.

Scottsdale London Dubai Bangalore Sydney



Gaea Global Technologies, Inc.
5201 Great America Pkwy Suite 320 / Santa Clara, CA 95054
gaeaglobal.com / 844 987 4232 / sales@gaeaglobal.com



MAKE BETTER DECISIONS WITH CONNECTED MODELS

Capital project owners have a unique and important role across the project lifecycle: First, they must define the scope of the project. Then they need to monitor and guide task execution. Finally, they must plan the efficient ongoing maintenance of the new facility.

To get there, these owners — Departments of Transportation (DOTs), government agencies, health care systems, commercial developers — must often deal with a variety of 3-D models developed by various stakeholders over the course of the project. Without an integrated solution, managing these different models and their associated data can be a time-consuming process.

InfinyD helps owners more efficiently manage across the project lifecycle:

PROGRESS MONITORING

- Through direct integration with other systems, quickly generate project reports without outside assistance
- Utilize quantity tracking to more efficiently manage assets
- Integrate with scheduling systems for timely visibility into project performance

MAINTENANCE AND FACILITY MANAGEMENT

- Easily schedule facility inspections and service requests
- Manage space more efficiently by connecting model and data
- Track inspection progress electronically with the MobilyD module to increase accuracy and efficiency

