

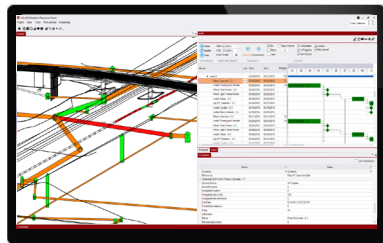
AGGREGATE PROJECT DATA TO UNCOVER SIGNIFICANT ORGANIZATIONAL VALUE

Today’s capital projects are more complex than ever. Many stakeholders are often involved and each may use different software to manage designs, costs, schedules and assets. Lack of interoperability between these systems increases the risk of overruns, change orders, and miscommunication between key project stakeholders.

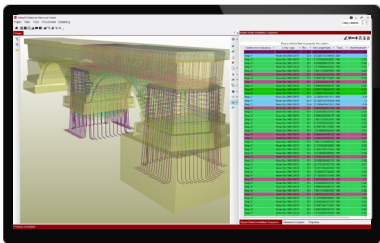
To solve this problem, InfinyD consolidates data from disparate sources to create a single project platform that can be leveraged across the project lifecycle. InfinyD is not a design tool. It instead links business data into a project information model that merges every object that needs to be manufactured, installed or constructed. With InfinyD, project teams share a model that becomes enriched with relevant project

data, ensuring better communication, alignment and efficiency. By collecting relevant project data during project execution, the turnover process is streamlined, allowing owners to perform ongoing maintenance more efficiently.

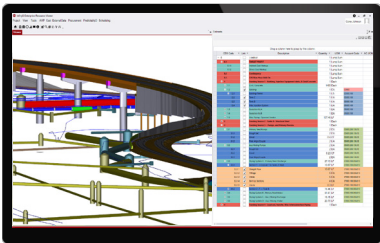
- Delivering Value from Your Project Data
- Streamline stakeholder communications
 - Gain real-time status across systems and disciplines
 - Increase material management efficiency
 - View and address schedule impacts earlier
 - Avoid rework and project delays
 - Compare plans to actuals in real time
 - Enable full asset information management



Visual Scheduling



Visual Procurement



Visual Estimating

.....

ABOUT INEIGHT

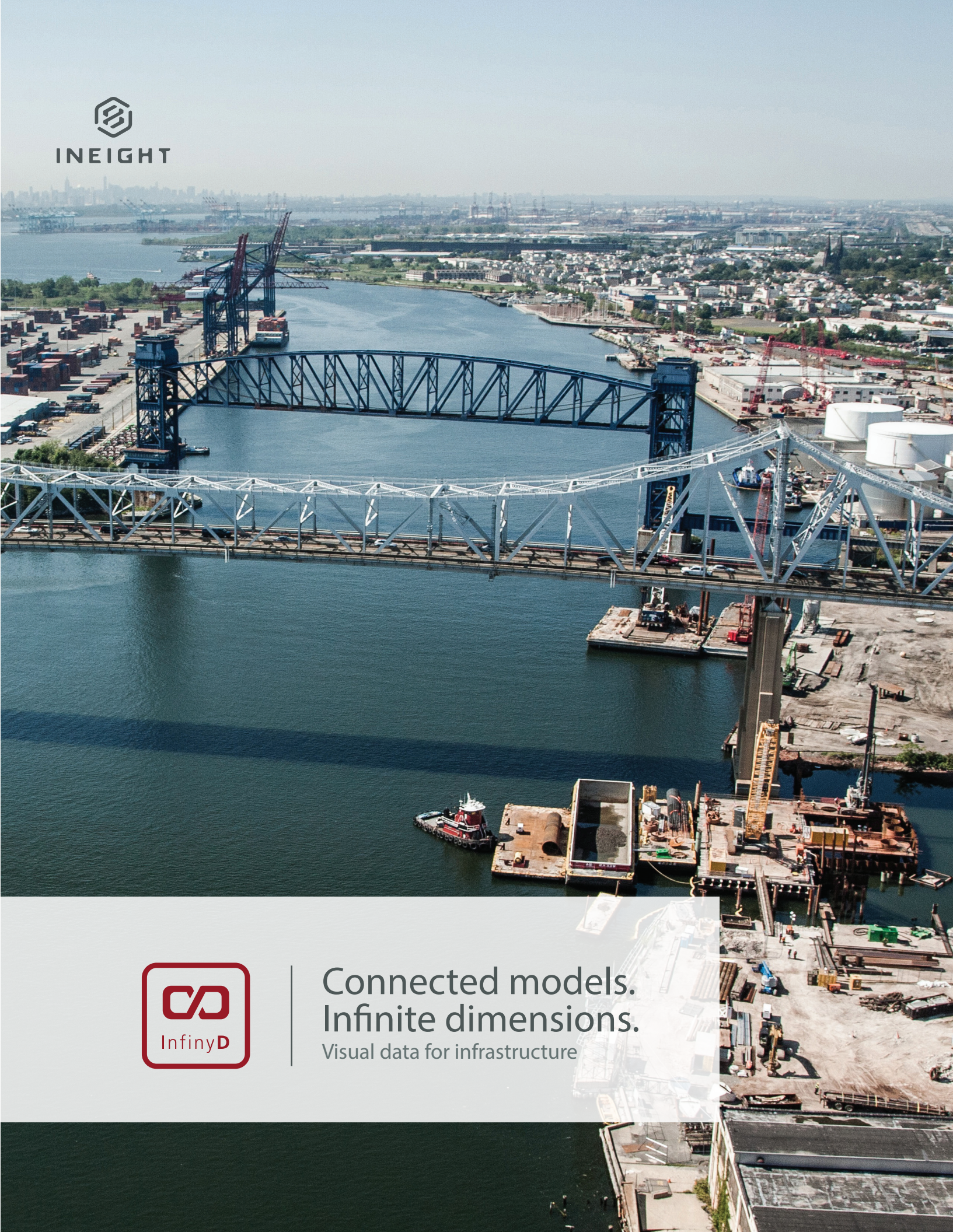
With applications trusted for more than 25 years, InEight combines proven software technology with a unified vision to help companies visualize, estimate, manage, control and connect all aspects of capital and maintenance projects. InEight now has more than 20,000 users in more than 500 companies in 33 countries.

The InEight solution portfolio enables project-driven companies to get the visibility and control they need to avoid surprises, increase operational efficiency and improve profitability across the project lifecycle. Based in Scottsdale, Ariz., InEight is a subsidiary of Kiewit Corporation (Kiewit). Kiewit, through its subsidiaries, is one of North America’s largest and most respected construction and engineering organizations.

Scottsdale London Dubai Bangalore Sydney



Gaea Global Technologies, Inc.
5201 Great America Pkwy Suite 320 / Santa Clara, CA 95054
gaeaglobal.com / 844 987 4232 / sales@gaeaglobal.com



Connected models.
Infinite dimensions.
Visual data for infrastructure

DRIVE BETTER DECISIONS WITH CONNECTED MODELS

From bridges, highways, rails, airports to water treatment plants, infrastructure projects significantly improve everyday life for people around the world.

However, the cost of infrastructure construction projects are increasing and margins remain slim. One of the primary reasons is the increasing number of stakeholders involved as projects grow in size and complexity. Even mid-size infrastructure projects can have a full array of government owners, private owners, architects, design firms, general contractors, specialized contractors, subcontractors, consultants, and suppliers.

To keep everything moving forward, it is critical for all stakeholders to share the project data they each create in their own specialized design modeling software.

COMMUNICATE ACROSS THE PROJECT

InfinyD provides a central repository for virtual design and construction data accessible to key stakeholders. Design data from authoring solutions can be aggregated and stored within the InfinyD database, providing a single source of truth.

Furthermore, InfinyD can integrate current business processes by linking workflows across scheduling, estimating, document control, and ERP systems. This simplifies stakeholder communication and provides up-to-date reports.

MANAGE SUBCONTRACTORS

When dealing with multiple subcontractors, keeping track of job status and managing payment schedules can be a time-consuming effort. The statusing capabilities of InfinyD and its links with scheduling systems enable contractors to streamline communication between subcontractors while managing their payment schedules. Through the model, the contractor can identify which part of the project is assigned to which subcontractor and monitor their respective performance.

